

# START SMALL



CONCORDIA  
UNIVERSITY  
OF EDMONTON

# DISCOVER EDMONTON'S UNIVERSITY.

Whether you study arts,  
science, or management,  
no two CUE degrees  
are the same—because  
no two students are the same.  
But don't take our word  
for it. Discover Edmonton's  
University for yourself.



CONCORDIA  
UNIVERSITY  
OF EDMONTON

[concordia.ab.ca/future-students](https://concordia.ab.ca/future-students)

[recruitment@concordia.ab.ca](mailto:recruitment@concordia.ab.ca)

[concordia.ab.ca/questions](https://concordia.ab.ca/questions)

DISCOVER  
WHY  
SMARTER  
IS SMARTER

**OPEN  
HOUSE**

OCTOBER 19, 2019

[CONCORDIA.AB.CA/OPEN-HOUSE](http://CONCORDIA.AB.CA/OPEN-HOUSE)

**PROGRAM  
INFO NIGHT**

MARCH 12, 2020

[CONCORDIA.AB.CA/INFONIGHT](http://CONCORDIA.AB.CA/INFONIGHT)

**STUDENT  
FOR A DAY**

OCTOBER TO MARCH

[CONCORDIA.AB.CA/SFAD](http://CONCORDIA.AB.CA/SFAD)

**CAMPUS  
TOURS**

ALL YEAR ROUND

[CONCORDIA.AB.CA/TOURS](http://CONCORDIA.AB.CA/TOURS)

## MESSAGE FROM THE PRESIDENT

We are Canada's pre-eminent small university, with world-class research facilities, and faculty who are leaders in their fields.



## WELCOME TO CUE

I invite you to discover the many programs, services, and opportunities that Concordia University of Edmonton (CUE) has to offer.

We are committed to the highest standards in education, maximizing potential, and offering you a first-class, student-focused experience that you will remember long after you graduate.

Outside of your studies you will find a small, tight-knit student community, nationally acclaimed sports teams, superb theatre and music events, and all kinds of activities in which you can get involved.

As for me, you'll find me around campus, chatting with students, cheering alongside you at a Thunder events, attending drama or music performances, or taking in the beauty of our campus. So when you see me, feel free to come and say hello and introduce yourself.

I very much look forward to meeting you,

**Tim Loreman**  
President & Vice-Chancellor

## MESSAGE FROM THE PRESIDENT

**WE GUARANTEE** you'll start your career within six months of graduation—or we'll give you a year of undergraduate classes free of charge.

**IT'S CALLED THE CONCORDIA COMMITMENT.** And there's no program like it in Alberta. How can we be so confident in the value of your education at CUE? It starts with staying small. Our size is your advantage. Your education will be yours alone—personalized to your passions.

CONCORDIA COMMITMENT

**QUESTIONS?** [studentlife@concordia.ab.ca](mailto:studentlife@concordia.ab.ca) • [concordia.ab.ca/cuecommitment](http://concordia.ab.ca/cuecommitment)

**REGISTER HERE** [concordia.ab.ca/cuecommitment](http://concordia.ab.ca/cuecommitment)



1 MINUTE TO  
THE RIVER VALLEY

10 MINUTES TO  
TASTY TAPAS

20 MINUTES TO  
A GROCERY STORE



10 MINUTES TO  
RECREATION CENTRES  
PRACTICE YOUR LAP TIME

10 MINUTES TO  
COMMONWEALTH STADIUM  
HOME OF THE CFL EDMONTON ESKIMOS

36 MINUTES TO  
WHYTE AVENUE  
THE PLACE TO CELEBRATE FINALS



14 MINUTES TO THE  
ALBERTA LEGISLATURE

24 MINUTES  
TO SKIING AT SNOW VALLEY

26 MINUTES  
TO IKEA



30 MINUTES TO  
ROGERS PLACE  
HOME OF THE NHL EDMONTON OILERS

40 MINUTES TO  
124TH STREET  
HOME TO LOCAL BOUTIQUES,  
CAFÉS & RESTAURANTS

60 MINUTES TO  
WEST EDMONTON MALL  
THE LARGEST MALL IN NORTH AMERICA





**EXPERIENCE  
A SMALL**

**UNIVERSITY  
IN A BIG CITY.**

# DISCOVER YOUR PURPOSE

## OUR PROGRAMS

**90% OF CUE STUDENTS SAID**  
that their profs took a personal  
interest in their academic progress  
(compared to a  
65% national average).

Source: CUSC Survey 2018

[CONCORDIA.AB.CA/PROGRAMS](http://CONCORDIA.AB.CA/PROGRAMS)

## ADMISSION REQUIREMENTS

LISTED ON  
PAGES 35 - 36

# FACULTY OF ARTS

## 4 YEAR BACHELOR OF ARTS DEGREE MAJORS

English  
General Studies  
Music  
Psychology  
Psychology (Applied Emphasis)  
Religious Studies  
Sociology

## 3 YEAR BACHELOR OF ARTS DEGREE CONCENTRATIONS

Drama  
English  
French  
History  
Music  
Philosophy  
Political Economy  
Psychology  
Religious Studies  
Sociology

## INTERNATIONAL

Bachelor of Arts (French) / License Lettres Modernes (France)

## GRADUATE STUDIES

Graduate Certificate and Diploma  
in Psychological Assessment (PA)



# MIHALCHEON SCHOOL OF MANAGEMENT

## 4 YEAR BACHELOR OF MANAGEMENT DEGREE (GENERAL)

### Available emphasis in:

Accounting  
Conflict Management  
Data Management  
Finance  
Human Resource Management  
Leadership  
Marketing

## DUAL DEGREES

Bachelor of Management (5 year) and  
Bachelor of Science (Chemistry)

## INTERNATIONAL

Bachelor of Management/Bachelor  
of Economics or Management (Beijing)

## GRADUATE STUDIES

Master of Information Systems  
Assurance Management (MISAM)  
Master of Information Systems  
Security Management (MISSM)  
Graduate Diploma in Information Assurance  
Graduate Diploma in Information Security

# FACULTY OF EDUCATION

## AFTER DEGREE

Bachelor of Education (2 years)  
Elementary Specialist

## GRADUATE STUDIES

Master of Education in Educational Leadership

## DEGREE MINORS

Biochemistry  
Biology  
Business  
Canadian Studies  
Career Development  
Chemistry  
Classical Languages and Civilizations  
Drama  
Early Childhood Education  
Economics  
Education  
English  
Environmental Science  
Forensic Studies\*  
French  
History  
Information Technology and Computing Science  
Mathematics  
Music  
Philosophy  
Physical Education and Sport Studies  
Physics  
Political Science  
Psychology  
Religious Studies  
Sociology

\* Restricted to the four-year Bachelor of Arts in  
Psychology (Applied Emphasis) program

# FACULTY OF SCIENCE

## 4 YEAR BACHELOR OF SCIENCE DEGREE MAJORS

Biology

Available emphasis in:

Cell and Molecular Biology  
Integrative Biology

Chemistry

Environmental Science

Available emphasis in:

Environmental Assessment and Remediation  
Information Technology (New Major)  
Mathematics

## 3 YEAR BACHELOR OF SCIENCE DEGREE CONCENTRATIONS

Biology

Chemistry

Environmental Science

Mathematics

## AFTER DEGREE

Bachelor of Environmental Health (16 months)

## DUAL DEGREES

Bachelor of Management (5 year)  
and Bachelor of Science (Chemistry)

## GRADUATE STUDIES

Graduate Diploma in  
Environmental Public Health  
Practice

# FACULTY OF ARTS

I was constantly challenged to improve many of the skills that are valuable in a knowledge economy: critical thinking, research capacity, creativity, and verbal and written communication skills.

**Kelsea Gillespie**

2017 BA

[CONCORDIA.AB.CA/ARTS](http://CONCORDIA.AB.CA/ARTS) • [INFO@CONCORDIA.AB.CA](mailto:INFO@CONCORDIA.AB.CA)



## WHERE GREAT IDEAS START SMALL.

Encounter powerful ideas about the human experience and prepare yourself for a great career. A Bachelor of Arts degree helps develop the necessary skills for work in several industries, including technology, marketing, and business operations, as you immerse yourself in the best and brightest concepts in the humanities, fine arts, and social sciences.



---

# DEGREE OPTIONS

---

## **4** YEAR BACHELOR OF ARTS DEGREE MAJORS

English  
General Studies  
Music  
Psychology  
Psychology APPLIED EMPHASIS  
Religious Studies  
Sociology

---

## **3** YEAR BACHELOR OF ARTS DEGREE CONCENTRATIONS

Drama  
English  
French  
History  
Music  
Philosophy  
Political Economy  
Psychology  
Religious Studies  
Sociology

---

## **INTERNATIONAL**

Bachelor of Arts (French)  
/ License Lettres  
Modernes (France)



# MIHALCHEON SCHOOL OF MANAGEMENT

The opportunities in the Management program are astronomical as the instructors have a wide variety of experience in all aspects of the business world.

**Theodore Krein**

2019 BMgt



## LEADERS ON A GLOBAL SCALE.

Through our highly innovative and flexible degree program, you will develop key analytical, business, communication, and professional skills and learn from instructors with real-life business and industry expertise.

Thrive in the field of your choice at the Mihalcheon School of Management, become a strong leader, and learn through diverse platforms including a paid internship.





---

# DEGREE OPTIONS

---

## **4** YEAR BACHELOR OF MANAGEMENT DEGREE (GENERAL)

AVAILABLE EMPHASIS IN

- Accounting
- Conflict Management
- Data Management
- Finance
- Human Resource Management
- Leadership
- Marketing

---

## **DUAL DEGREES**

Bachelor of Management and Bachelor of Science (Chemistry)

---

## **INTERNATIONAL**

Bachelor of Management/  
Bachelor of Economics or  
Management (Beijing)



# FACULTY OF SCIENCE

The professor was so engaging and made it such an exciting learning experience... they open your eyes to things you haven't even thought of.

**Kiera Pajunen**

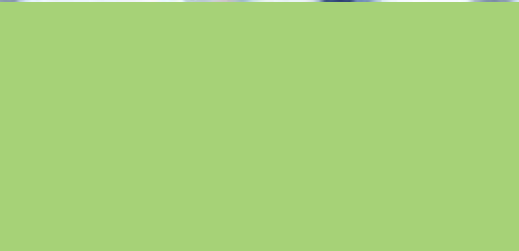
2018 BSc



## SMALL STEPS TO BIG DISCOVERIES.

Develop your skills in investigation, research, analysis, and experimentation. You'll be challenged to take a closer look at the natural and physical world using cutting-edge best practices, applying rigorous and logical interdisciplinary thinking. Our science degree can be the foundation for many careers or pre-professional like medical or dental school, with unique opportunities for lab training and hands-on experience.





# DEGREE OPTIONS

## 4 YEAR BACHELOR OF SCIENCE DEGREE MAJORS

Biology

AVAILABLE EMPHASIS IN:

Cell and Molecular Biology

Integrative Biology

Chemistry ACCREDITED BY CSC

Environmental Science

AVAILABLE EMPHASIS IN:

Environmental Assessment and Remediation

Information Technology

Mathematics

## 3 YEAR BACHELOR OF SCIENCE DEGREE CONCENTRATION

Biology

Chemistry

Environmental Science

Mathematics

## DUAL DEGREES

Bachelor of Management and Bachelor of Science (Chemistry)

# DUAL DEGREES

The combined degree in Management and Chemistry will give graduates from your program the skills to set up their own businesses, become successful technical entrepreneurs, or compete for science management positions in industry and government.

Association of the Chemical  
Profession of Alberta (ACPA)



# DOUBLE YOUR

# OPPORTUNITIES.

CUE offers dual degrees, allowing you to gain both a **Bachelor of Management degree** and a **Bachelor of Science (Chemistry) degree**, within a five-year timespan.

The dual degrees program offers you the unique prospect of graduating with both a business and a chemistry background. This will open up a host of career possibilities through independent and ethical intellectual and creative work, the building of ever-important and sought-after transferable skills, and the experience of an industry-specific internship.



# OFFICE OF EXTENSION AND CULTURE

THE OFFICE OF EXTENSION AND CULTURE OFFERS INTERESTING AND ACCESSIBLE SHORT-TERM, NON-CREDIT COURSES IN LANGUAGES, CULTURE, SKILLS DEVELOPMENT, AND PROFESSIONAL TRAINING.

**SOME OF OUR COURSES INCLUDE:**

English for Academic  
Purposes (EAP)

Tai Chi

Music

Chinese Language

CELPPIP Preparation  
Program

**LANGUAGE PROFICIENCY EXAMS:**

Canadian English  
Language Proficiency  
Index Program (CELPPIP)

Canadian Academic  
English Language  
Test (CAEL)

Goethe-Institut

**CONTACT:** [concordia.ab.ca/extension](http://concordia.ab.ca/extension)  
[extension@concordia.ab.ca](mailto:extension@concordia.ab.ca)

---

## THE GOOD STUFF

---

- Student privileges
- Alumni privileges
- Flexible methods of delivery
- Variety of course content
- Rich extra curricula and culture excursions
- Engagement with CUE community partners and international partners
- Open to everyone and no limit to the number of extension courses you can apply for

# FACULTY OF EDUCATION

What's so great about this program is how in-depth we were prepared... I was completely ready the first day I walked into a classroom.

**Chantelle Stabler**

2011 BEd

[CONCORDIA.AB.CA/EDUCATION](http://CONCORDIA.AB.CA/EDUCATION) • [EDUCATION@CONCORDIA.AB.CA](mailto:EDUCATION@CONCORDIA.AB.CA)



## EDUCATING HEARTS AND MINDS.

Recognized by Alberta Education and the Alberta Teachers' Association, our two-year elementary education program gives you the opportunity to gain the necessary competencies for certification as a teacher in Alberta. In our After Degree program, you are mentored by faculty, staff, and accomplished teachers in the field. You will also benefit from field experiences and will learn about program planning, instructional strategies, classroom management, and comprehensive school health.





Our program offers unique initiatives to help you in your transition to employment as a teacher, as well as supporting volunteer time in the classroom following the completion of the degree.

## BRIDGES BURSARY PROGRAM

This program is offered to new graduates of the Bachelor of Education After Degree program to fund volunteer time in the classroom following completion of their studies. This creates a transition experience for new-to-the-profession teachers and helps them make connections within the field.

## 2 YEAR BACHELOR OF EDUCATION AFTER DEGREE

### ADMISSION REQUIREMENTS

**SPACE IS LIMITED, APPLY EARLY.**

Completion of a three or four-year baccalaureate degree from a recognized college or university

A minimum Admission Grade Point Average (AGPA) of 2.3 (on CUE's 4-point scale) or equivalent on the most recently attempted 30 credits

Completion of 3 credits in English language/literature

Completion of 9 credits from two study areas (see [concordia.ab.ca/academic-calendar](http://concordia.ab.ca/academic-calendar) for list)

A volunteer/work experience record

Two confidential assessment forms

A Philosophy of Teaching statement

Evidence of proficiency in computer knowledge and use

# DEPARTMENT OF PUBLIC HEALTH

According to the 2018 CIPHI National Salary Survey, Environmental Health Officers or Public Health Inspectors in Alberta can start at almost \$40 an hour and can make over six figures!

[INFO@CONCORDIA.AB.CA](mailto:INFO@CONCORDIA.AB.CA) • [CONCORDIA.AB.CA/PUBLIC-HEALTH](http://CONCORDIA.AB.CA/PUBLIC-HEALTH)



# CONNECT YOUR HEALTH TO YOUR WORLD.

If this program seems unique, that's because it is. This is **one of only six programs in Canada** that prepares you for the Canadian Institute of Public Health Inspectors (CIPHI) certification exam to be able to practice as an Environmental Health (EH) officer in Canada (optional). You will also benefit from a **12-week field placement**.





EH is the practice of protecting public health by applying relevant provincial legislation and providing supports to mitigating the physical, chemical, and biological risks found in the natural and man-made environment.

EH professionals are focused on prevention, consultation, investigation, communicable disease control and health promotion activities aimed at ensuring safe and healthy:

- Water supplies
- Food establishments
- Personal service facilities
- Swimming pools and recreational water
- Housing: rental dwellings, long-term care and childcare facilities

## 16 MONTH BACHELOR OF ENVIRONMENTAL HEALTH AFTER DEGREE

### ADMISSION REQUIREMENTS

**SPACE IS LIMITED, APPLY EARLY.**

Completion of a three- or four-year baccalaureate science degree from a recognized college or university

A minimum Admission Grade Point Average (AGPA) of 2.3 (on CUE's 4-point scale) or equivalent on the most recently attempted 30 credits

**Successful completion of 6 credits as listed below:**

- a.) 3 credits in Chemistry
- b.) 3 credits in Statistics

Demonstrated fulfilment of CUE's English language requirement

To register in the required course ENVHEST (Field Experience in Public Health Inspection) students will need to submit an immunization record.

# GRADUATE STUDIES

... over the years, we've hired numerous graduates of the MISSM and MISAM programs. The programs helped the students develop a strong technical foundation in their respective areas and provided us with talented and passionate individuals.

**Deloitte Canada**

Paul Groch, Partner



# PUT YOUR PASSION INTO PRACTICE.

Graduate Studies is your connection to a higher level across an array of unique programs and diverse fields. You'll dig deeper, follow your passion, and impact society at local, national, and international levels. Complete your program enlightened and prepared to take on a career in your respective field.



## FACULTY OF ARTS

Graduate Certificate and Diploma in Psychological Assessment (PA)

## FACULTY OF MANAGEMENT

Master of Information Systems Assurance Management (MISAM)  
Master of Information Systems Security Management (MISSM)  
Graduate Diploma in Information Assurance (GDIA)  
Graduate Diploma in Information Security (GDIS)

## FACULTY OF SCIENCE

Graduate Diploma in Environmental Public Health Practice

## FACULTY OF EDUCATION

Master of Education in Educational Leadership



## GRADUATE STUDENTS' ASSOCIATION

The Concordia University of Edmonton Graduate Student Association (CGSA) safeguards the interests of graduate students. The Association provides the opportunity for graduate students to support one another and to deal with common concerns. GSA student events include the Meet-and-Greet event, Halloween party, Diwali event, Christmas Party, Indian Cultural Event, and year-end "Hand-over" party.

**CONTACT:** [concordiasga.com](http://concordiasga.com)  
[gsapresident@student.concordia.ab.ca](mailto:gsapresident@student.concordia.ab.ca)

## ADMISSION REQUIREMENTS

**SPACE IS LIMITED, APPLY EARLY.**

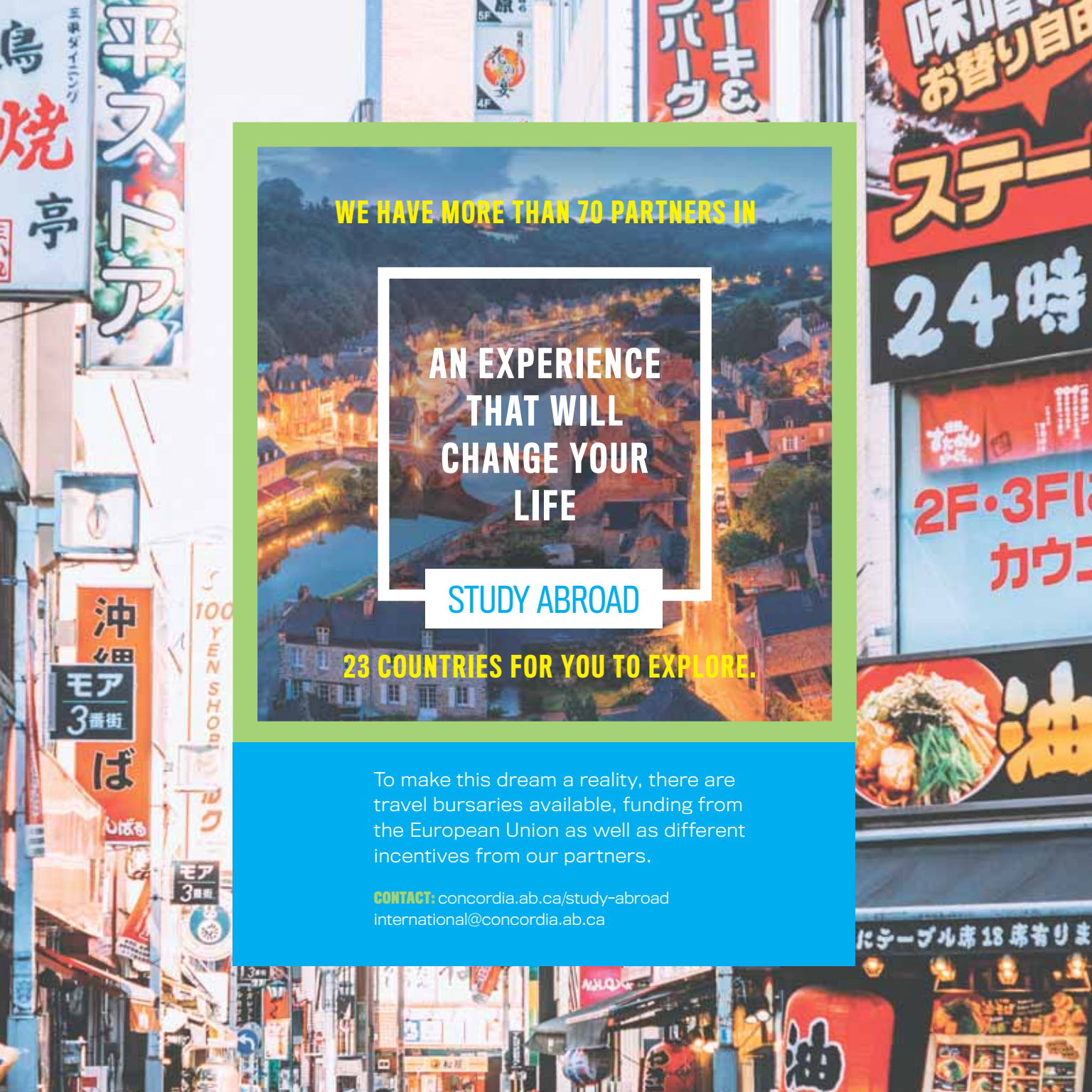
A three or four-year baccalaureate degree from Concordia University of Edmonton or equivalent from a recognized institution

An Admission Grade Point Average (AGPA) of 3.0 (on Concordia University of Edmonton's 4-point scale) or equivalent on the most recent 60 credits of undergraduate (or graduate) study

Demonstrated fulfillment of Concordia University of Edmonton's English language requirement (Graduate Studies)

*Please note that individual graduate programs may require additional admission requirements. For more information, please visit our webpage.*





WE HAVE MORE THAN 70 PARTNERS IN

AN EXPERIENCE  
THAT WILL  
CHANGE YOUR  
LIFE

STUDY ABROAD

23 COUNTRIES FOR YOU TO EXPLORE.

To make this dream a reality, there are travel bursaries available, funding from the European Union as well as different incentives from our partners.

**CONTACT:** [concordia.ab.ca/study-abroad](https://concordia.ab.ca/study-abroad)  
[international@concordia.ab.ca](mailto:international@concordia.ab.ca)

# MANAGEMENT DUAL DEGREE

CHINA

This exceptional four-year program lets you study years two and three of your Bachelor of Management degree at the International Business School of Beijing Foreign Studies University in China, after completing the first year at CUE. You will earn two degrees upon completion: a Bachelor of Management degree from CUE **and** a Bachelor of Economics or Bachelor of Management degree from Beijing.

# ARTS DUAL DEGREE

FRANCE

This unique three-year program allows you to begin your Bachelor of Arts degree in French at CUE, and then complete your final year at Université de Bretagne Sud in Lorient, France. You'll earn two degrees upon completion: your Bachelor of Arts (French) **AND** your Licence Lettres Modernes (the European equivalent).

## ELIGIBILITY REQUIREMENTS:

- Complete 18 credits at CUE before departure
- GPA for all courses equal to or above 2.50
- Most recent term GPA equal to or above 2.70
- Enrolled in a program at the time of departure
- Fulfills program residency requirements as outlined in Academic Calendar
- Meets language proficiency requirement of the host institution if applicable
- In good financial standing

# STUDENT LIFE

CONCORDIA.AB.CA/STUDENT-SERVICES • STUDENTLIFE@CONCORDIA.AB.CA



# SUPPORT AT EVERY STEP.

University life can be exciting and stressful. We offer a wide variety of services to help you achieve your education goals and balance your experience.





---

## SERVICES

---

### CAREER SERVICES

Networking and job search strategies  
Cover letter and resume reviews.

Interview preparation.

Advice on applying to graduate school, medical school, law school, and other professional programs.

### CO-CURRICULAR RECORD

Students keep track of their volunteer work, athletics, and extracurricular activities. Our easy-to-use app provides students with a transcript of these activities at any point in their degree program, allowing them to showcase their skills to potential employers.

### LEARNING ACCOMMODATIONS

We provide opportunities for people with disabilities and mental health diagnoses to achieve their full potential in their education and careers.

### TUTORING SERVICES

All CUE students are eligible for 5 hours of free tutoring per term.

### WRITING CENTRE

The Writing Centre provides free, unlimited, one-on-one writing consultations.



**SMALL  
IS  
MIGHTY**

  [CUE\\_ATHLETICS](#)  [CUETHUNDER](#)



# WINNERS OF 10 NATIONAL CHAMPIONSHIPS.

CUE's athletic teams compete in the highly competitive Alberta Colleges Athletics Conference (ACAC). We have a proud history of excellence at the highest levels both provincially and nationally.

**MORE INFO:** [gothunder.ca](http://gothunder.ca)



**WANT TO BE  
PART OF  
A WINNING  
TEAM?**

Badminton  
Basketball  
Cross Country  
Curling  
Golf  
Hockey

Soccer  
Indoor Track  
Volleyball



# STUDENT RESIDENCE: LIVE AND LEARN ON CAMPUS.



From new life skills to new friends, living in residence is an experience that makes the most of your university years. Furnished single- and double-occupancy rooms are available, all with internet included. Each residence building is equipped with study spaces and communal kitchens and laundry facilities.

Residence fees starting at \$1,975/semester

Meal Plan fees starting at \$1,760/semester

**CONTACT:** [concordia.ab.ca/residence](http://concordia.ab.ca/residence)  
[residence.services@concordia.ab.ca](mailto:residence.services@concordia.ab.ca)

APPLY ONLINE AT [CONCORDIA.AB.CA/RESIDENCE](http://CONCORDIA.AB.CA/RESIDENCE)



**ACCESS TO  
UNIVERSITY  
RECREATIONAL  
FACILITIES**

# CONCORDIA STUDENTS' ASSOCIATION

OURCSA.CA • CSAPRESIDENT@STUDENT.CONCORDIA.AB.CA



The Concordia Students' Association (CSA) advocates for student rights. The CSA also supports students through many services including:

- Health and Dental Plan
- Mental Health Initiative
- Sexual Violence Support
- Supplemental Instruction
- Food Bank
- Supplemental Instruction
- Awards and Scholarships

Enrich your university experience by joining our activities, clubs or one of our many student groups:

## STUDENT UNIONS

- Concordia Arts Society
- Concordia Science Society
- Environmental Health Students' Union

- Concordia Management Council
- Education Students' Society

## CLUBS

- Concordia Christian Union
- Concordia Model United Nations Club
- Concordia Psychology Club
- Concordia Pride
- Concordia Social Club

- Concordia Visual Cultural Society
- Green Thespians Club
- Indigenous Students' Council
- Table Tennis Alliance of Concordia

## NEWSPAPER

- The Bolt News

## EVENTS & ACTIVITIES

We offer many experiences, including music, drama, and athletics, as well as a number of public events from the Pride Parade to International Culture Days. The CSA plans even more events such as the January Jam, pep rallies, Recovery Week, Science Week, Wellness Wednesdays, Thunderfest, CUCA Spooka, an annual ski trip and so much more!




# INDIGENOUS STUDENT SERVICES

University is a huge decision to make. We have families, work, community commitments and more that we need to take care of. I personally battled with wondering if I was smart or good enough for university. Ultimately, I made the courageous step of choosing to apply and I'm so grateful that I did.

**Danielle Powder**

2016 BA, Manager, IKRC

[CONCORDIA.AB.CA/INDIGENOUS](http://CONCORDIA.AB.CA/INDIGENOUS) • [INDIGENOUS@CONCORDIA.AB.CA](mailto:INDIGENOUS@CONCORDIA.AB.CA)



# HONOURING INDIGENOUS WAYS OF KNOWING, BEING AND SHARING.

The Indigenous Knowledge and Research Centre (IKRC) aims to be a home away from home for Indigenous students, where they can connect, share and seek support. The IKRC is home to our Elders Advisory Counsel, Indigenous Steering Committee and our Indigenous Student Council.



---

## SERVICES

---

### THROUGH THE IKRC, INDIGENOUS STUDENTS HAVE ACCESS TO:

Advocacy

Basic academic advising

Personal support

Referral services

Volunteer opportunities

Scholarship and bursary support

Peer support

Cultural support such as smudging, ceremonies, teachings and connections to local Elders and Knowledge Keepers

Student-centred gathering and programs

### THE IKRC HOSTS A VARIETY OF EVENTS THROUGHOUT THE YEAR INCLUDING:

An Indigenous-focused research series

Film screenings

Book clubs

Beading circles

Sharing circles

Ribbon skirt making

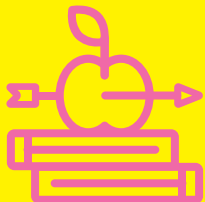
Feasts, teachings

Recreational opportunities and more!

# WHAT WILL IT COST?

Estimated expenses for domestic undergraduate students based on an 8-month study period (fall & winter) with 5 courses in each semester. Additional fees may be assessed depending on actual course registration for things like science labs and private music lessons.

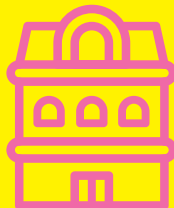
[CHECK OUT THE BREAKDOWN OF THESE COSTS ONLINE: CONCORDIA.AB.CA/TUITION-FEES](http://CONCORDIA.AB.CA/TUITION-FEES)



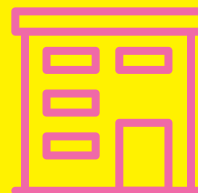
**TUITION & FEES**  
\$8,136



**BOOKS & SUPPLIES**  
\$1,000-\$1,600



**ON CAMPUS LIVING**  
\$7,546.40 - \$9,373.80



**OFF CAMPUS**  
\$9,392



**LIVING AT HOME**  
\$4,496

# HOW WILL I PAY FOR MY UNIVERSITY EDUCATION?

By attending university, you're investing in your future. And we know this comes with a price tag. There are numerous financial resources to make your university education come true.

**GOVERNMENT FUNDING RESOURCES:**  
ALBERTA STUDENT LOANS: [STUDENTAID.ALBERTA.CA](http://STUDENTAID.ALBERTA.CA)  
FOR OTHER PROVINCES/TERRITORIES: [CANLEARN.CA](http://CANLEARN.CA)



# FINANCIAL AID AND AWARDS

## UNIVERSITY ENTRANCE SCHOLARSHIP

A guaranteed renewable scholarship for high school students who present a minimum average of 75%. Scholarship recipients are identified through the admission process.

---

Award Average (%)	Award Value (\$)	
<b>95+</b>	<b>\$20,000</b>	<b>(5,000/YR)</b>
<b>90-94</b>	<b>\$15,000</b>	<b>(3,750/YR)</b>
<b>85-89</b>	<b>\$8,000</b>	<b>(2,000/YR)</b>
<b>80-84</b>	<b>\$6,000</b>	<b>(1,500/YR)</b>
<b>75-79</b>	<b>\$4,000</b>	<b>(1,000/YR)</b>

---

**DEADLINE  
IS APRIL 1ST**

### OTHER SPECIALIZED RESOURCES:

- Awards for Indigenous Students
- Awards for student athletes
- Donor Funded Scholarships
- External scholarships and awards
- Study Abroad
- Students with Permanent Disabilities
- University Transfer Scholarship

Visit our **Financial Aid and Awards website to explore your award options:** [financialaid.concordia.ab.ca](http://financialaid.concordia.ab.ca)

**CONTACT:** [concordia.ab.ca/finaid](http://concordia.ab.ca/finaid)  
[finaid@concordia.ab.ca](mailto:finaid@concordia.ab.ca) • 780.479.9220

# ADMISSIONS

## APPLY

Alberta Grade 12  
Subject Classifications

Subjects presented  
for admission must  
be 5 credits in weight.

### MORE INFO:

[concordia.ab.ca/apply](http://concordia.ab.ca/apply)

#### GROUP A (HUMANITIES)

Social Studies 30-1  
Aboriginal Studies 30  
30-level languages other than English

#### GROUP B (FINE ARTS)

Art 30 and 31  
Choral Music 30  
Dance 35  
Drama 30  
Instrumental Music 30  
Music 30 and 35  
Performing Arts 35A, B, or C  
Communications Technology,  
Advanced (Course Code COMM  
3XXX formerly SUM3003)

#### GROUP C (MATH AND SCIENCES)

Mathematics 30-1 or  
Mathematics 30-2\*  
Mathematics 31  
Biology 30  
Chemistry 30  
Physics 30  
Science 30  
Computing Science, Advanced

\* Only one of Mathematics 30-1  
or Mathematics 30-2 may  
be used for admission.

#### GROUP D (OTHER)

Excludes Special Projects 30

Excludes all Registered  
Apprenticeship Programs

All applicable Grade 12 Group D  
subjects must be at the "3000" level

Only Advanced Level Career  
and Technology (CTS) courses  
will be considered.

Any credit combination of  
applicable Grade 12 Group D  
subjects will be used to make  
up the required 5 credits

## BACHELOR OF ARTS

### COURSE REQUIREMENTS:

English Language Arts 30-1  
Four subjects from Group A, B, C, or D

### Notes:

A maximum of two Group B  
subjects may be presented

A maximum of one group D subject  
may be presented for admission

Two courses from the same second language  
cannot be used to meet more than one

Group A subject requirement

### MINIMUM REQUIREMENTS:

Early Admission: minimum overall of 65%  
Final Admission: minimum overall of 60%

### TRANSFER STUDENT ADMISSION REQUIREMENTS:

Applicants must normally present  
a minimum AGPA of 2.0

## BACHELOR OF MANAGEMENT

### COURSE REQUIREMENTS:

English Language Arts 30-1  
Mathematics 30-1 or Mathematics 30-2  
Three subjects from Group A, B, C, D

### Notes:

A maximum of one Group B subject  
may be presented

A maximum of one group D subject  
may be presented for admission

### MINIMUM REQUIREMENTS:

Early Admission: minimum overall of 65%  
Final Admission: minimum overall of 65%

### TRANSFER STUDENT ADMISSION REQUIREMENTS:

Applicants must normally present  
a minimum AGPA of 2.3

Must present Mathematics 30-1  
or Mathematics 30-2 or equivalent

## BACHELOR OF SCIENCE

### COURSE REQUIREMENTS:

English Language Arts 30-1  
Mathematics 30-1 or Mathematics 30-2  
Two subjects from Group C  
One subject from Group A, B, C, or D

### Notes:

Applicants pursuing a Chemistry  
concentration or major are strongly  
encouraged to present Chemistry 30

Applicants pursuing a Biology concentration  
or major are strongly encouraged to  
present Biology 30 and Chemistry 30

Applicants pursuing an Environmental  
Science concentration or major  
are strongly encouraged to present  
Biology 30 and Chemistry 30

### MINIMUM REQUIREMENTS:

Early Admission: minimum overall of 65%  
Final Admission: minimum overall of 60%

### TRANSFER STUDENT ADMISSION REQUIREMENTS:

Applicants must normally present  
a minimum AGPA of 2.0



# DUAL DEGREES BACHELOR OF MANAGEMENT & BACHELOR OF SCIENCE (CHEMISTRY)

## COURSE REQUIREMENTS:

English Language Arts 30-1  
Mathematics 30-1 or Mathematics 30-2  
Two subjects from Group C  
One subject from Group A, B, C, or D

## MINIMUM REQUIREMENTS:

Early Admission: minimum overall of 65%  
Final Admission: minimum overall of 65%

## TRANSFER STUDENT ADMISSION REQUIREMENTS:

Applicants must normally present  
a minimum AGPA of 2.3

Must present Mathematics 30-1 or  
Mathematics 30-2 or equivalent

**NOTES:** APPLICANTS PURSUING A CHEMISTRY  
MAJOR ARE STRONGLY ENCOURAGED TO  
PRESENT CHEMISTRY 30.

Applicants should keep in mind that their chosen program  
may contain courses for which there are specific Grade  
12 prerequisites that must be met in addition to the  
subjects used for admission.

In order to maximize future program and course choices,  
applicants are encouraged to present a broad range of  
subjects across Groups A, B and C.

Check the Academic Calendar for full admission details.

## JUMP START

Jump Start allows students in  
Grade 11 to apply to CUE with  
their Grade 11 grades. Students  
interested in applying early may  
do so from January 1 - June 15  
of the year they are in Grade  
11. Arts and Science applicants  
must show an overall average  
of 65% in their Grade 11 courses  
and Management and Dual  
Degrees applicants must show  
an overall average of 72%.  
Final admission is dependent  
on students completing their  
relevant Grade 12 courses  
and achieving minimum  
entrance averages for the  
program they have applied.

## INTERNATIONAL STUDENTS

Our campus offers a  
welcoming environment  
that is open to students  
from all beliefs and cultural  
traditions. We are very proud  
to represent diversity at CUE.

Students who wish to study  
at CUE while in Canada under  
a study permit (student visa)  
should contact Admissions  
for further information.

## CONTACT:

[concordia.ab.ca/international-students](http://concordia.ab.ca/international-students)  
[admits@concordia.ab.ca](mailto:admits@concordia.ab.ca)

## ACCEPTANCE OF AP/IB COURSES

We recognize students who  
complete their Advanced  
Placement and International  
Baccalaureate courses and  
exams. Students who receive a  
grade of 4 or 5 on the AP exams  
and 5 or higher on IB exams  
may be assessed for transfer  
credits towards courses at CUE.  
Refer to the current academic  
calendar for a full listing of  
eligible AP and IB courses.

**CONTACT:** [concordia.ab.ca/admissions](http://concordia.ab.ca/admissions)  
[admits@concordia.b.ca](mailto:admits@concordia.b.ca)

## APPLICATION DATES

### FALL INTAKE

October 1, 2019 - Applications Open  
June 30, 2020 - Applications Close

### WINTER INTAKE

February 1, 2020 - Applications Open  
November 1, 2020 - Applications Close

### SPRING/SUMMER INTAKE

October 1, 2020 - Applications Open  
March 1, 2021 - Applications Close

\*Undergraduate programs only.

NOTE: Dates subject to change.  
Visit the academic schedule online for a more details.

# IT STARTS WITH CONCORDIA UNIVERSITY OF EDMONTON.

FOLLOW THESE STEPS TO START YOUR FUTURE WITH US.

## 1 EXPLORE

Explore CUE! There's so many options to find out more about our campus, programs, student life, and more. Attend our Open House or Program Info Night, take a tour of campus, or become a Student for a Day. You'll love what you discover. [concordia.ab.ca/future-students](https://concordia.ab.ca/future-students)

## 2 CHOOSE

Select your program at [concordia.ab.ca/programs](https://concordia.ab.ca/programs). Check program admission requirements and application deadlines at [concordia.ab.ca/admissions](https://concordia.ab.ca/admissions). **Still have questions?** Ask away, anytime, anywhere, at [concordia.ab.ca/questions](https://concordia.ab.ca/questions).

## 3 APPLY

Apply for admission: [concordia.ab.ca/apply](https://concordia.ab.ca/apply)  
Apply for Scholarships, there's over two hundred million dollars available. Check out [concordia.ab.ca/scholarships](https://concordia.ab.ca/scholarships)  
Apply for residence: [concordia.ab.ca/residence](https://concordia.ab.ca/residence)

## 4 SEND

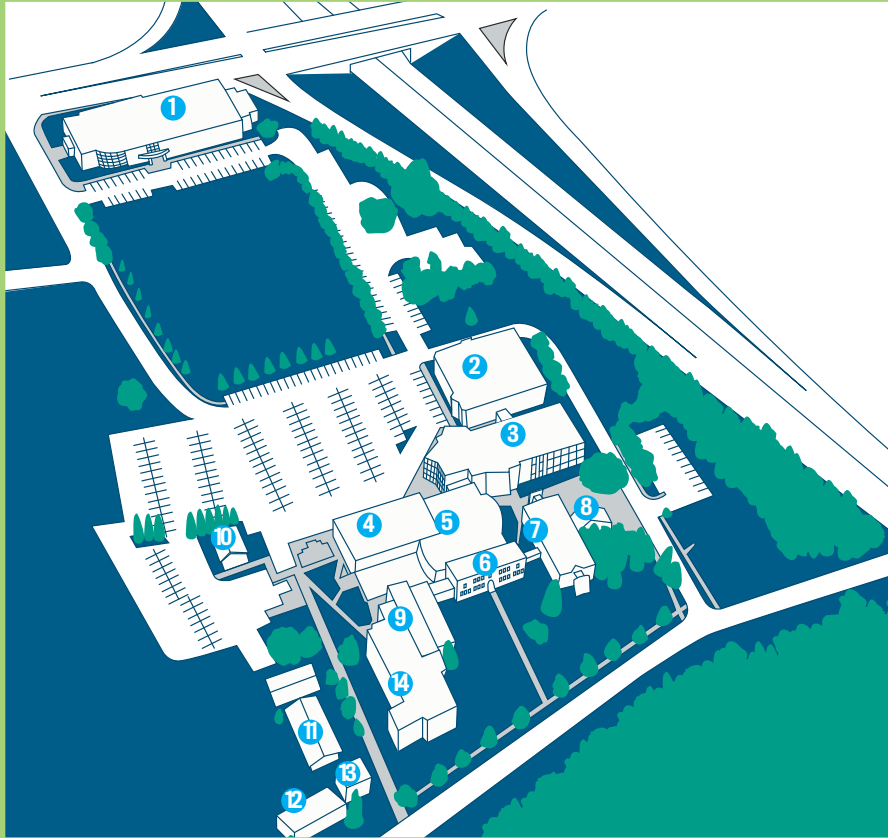
Send in your transcripts and any other required documents. If you completed your high school courses in Alberta, we'll get your transcripts as part of the application process through ApplyAlberta. If you completed your education outside of Alberta or Canada, you'll need to request that transcripts be sent.

## 5 CONNECT

Stay connected to CUE's Admission Advisors and respond if they contact you by email or phone with further questions or instructions. [admits@concordia.ab.ca](mailto:admits@concordia.ab.ca)

## 6 REGISTER

Accept your offer and pay your deposit so you can start registering for classes at [concordia.ab.ca/course-registration](https://concordia.ab.ca/course-registration)



PUBLIC TRANSIT

# GET HERE.

Stadium LRT station  
puts you close to CUE!

**FROM THERE, YOU CAN:**

Bike for 7 minutes or 14 minutes  
through the river valley!

Take the No. 2 bus for 10 minutes

**FROM COLISEUM LRT STATION:**

6 Minute Bike Ride

20-25 Minutes Walking via 73 Street

Take the #399 bus for 12 minutes  
(peak hours only)

- 1. Ralph King Athletic Centre
- 2. Arnold Guebert Memorial Library  
IT Services
- 3. Hole Academic Centre  
Bookstore  
Admissions  
Student Success Centre  
Registrar  
Financial Aid  
International
- 4. Alumni Hall  
Students' Association Office

- 5. Robert Tegler Student Centre
- 6. Schwermann Hall
- 7. Founders Hall  
Dormitory  
Cafeteria
- 8. Plant Operations
- 9. Guild Hall
- 10. Faculty House
- 11. Eberhardt Hall  
Dormitory

- 12. Wangerin House  
Dormitory
- 13. Alumni House
- 14. Allan Wachowich Centre  
for Science, Research,  
and Innovation  
Indigenous Knowledge  
and Research Centre  
Design Thinking Space  
Office of Extension and Culture

# START SMALL.

TELEPHONE: 1 780 479 8481  
TOLL-FREE: 1 866 479 5200  
WWW. CONCORDIA.AB.CA

---

7128 ADA BOULEVARD  
EDMONTON, ALBERTA, CANADA  
T5B 4E4

## START AT



CONCORDIA  
UNIVERSITY  
OF EDMONTON

**QUESTIONS?** [concordia.ab.ca/questions](http://concordia.ab.ca/questions) · [info@concordia.ab.ca](mailto:info@concordia.ab.ca)

   @CUEdmonton #CUEdmonton